

SOLUTIONS ENGINEERED SOLUTIONS ENG
INEERED SOLUTIONS ENGINEERED SOLUT
IONS ENGINEERED SOLUTIONS ENGINEERE
D SOLUTIONS ENGINEERED SOLUTIONS E
NGINEERED SOLUTIONS ENGINEERED SOL
UTIONS ENGINEERED SOLUTIONS ENGINE
ERED SOLUTIONS ENGINEERED SOLUTION
S ENGINEERED SOLUTIONS ENGINEERED
SOLUTIONS ENGINEERED SOLUTIONS ENG
INEERED SOLUTIONS ENGINEERED SOLUTI
ONS ENGINEERED SOLUTIONS ENGINEERE
D SOLUTIONS ENGINEERED SOLUTIONS EN
GINEERED SOLUTIONS ENGINEERED SOLUT
IONS ENGINEERED SOLUTIONS ENGINEERE
D SOLUTIONS ENGINEERED SOLUTIONS E
NGINEERED SOLUTIONS ENGINEERED SOL
UTIONS ENGINEERED SOLUTIONS ENGINE
ERED SOLUTIONS ENGINEERED SOLUTIONS
ENGINEERED **SOLUTIONS ENGINEERED.**

CSE Motto

Solutions Engineered is our business philosophy. From the start, our goal has been to provide our clients with excellent customer service while providing economic solutions to their design challenges. Our experience includes design, inspection, quality control, and project management. Our design team has designed over five million square feet of building area, comprising of residential, commercial, industrial, and institutional.

CSE History

CityScape Engineering (CSE) was founded in 2009 by Hadi Djohan with over 20 years of experience. In 2015, CSE called Port Washington as its new home. From the inception, CSE has attracted highly talented and ambitious team members, together, we established an institution that not only delivers, but also sensitive to our clients' needs.

CSE's portfolio of successful projects expanded to some 500,000 SF large scale mixed use and multifamily development and commercial facilities throughout New York, New Jersey, and Connecticut. Our design team has designed over ten million square foot of building area. Our clients come back for our attentive service, value conscious, and solutions engineered.

CityScape Engineering was involved over the full course of this project, beginning with preparing BPP and the demolition plan of the three structures which were originally on the site, to the support of excavation for the proposed construction, and finishing off with the structural design of the proposed building, all the while performing NYC special inspections of each of these components.



CSE Experience

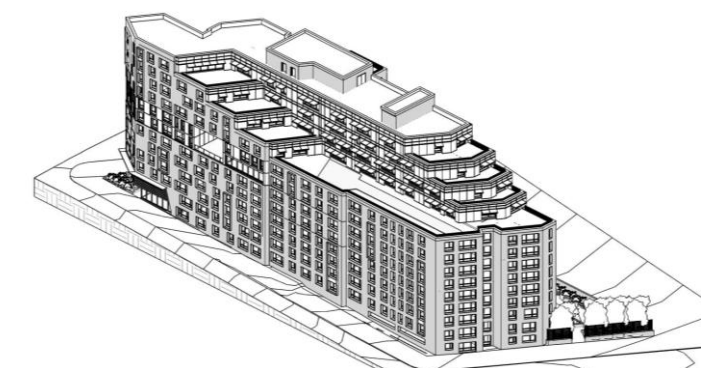
CSE has vast experience with many New York City agencies including Department of Buildings (DOB), Housing Urban Development (HUD) and Housing Preservation and Development (HPD). CSE has also worked with several branches of New York Metropolitan Transit Authority (MTA), including the Transit Authority (TA), Long Island Rail Road (LIRR), and Metro-North Railroad.

CSE MBE

CityScape Engineering is a registered Minority Business Enterprise (MBE) in the City of New York. We will make an ideal team for your MBE required projects.



Picture to the left:
Martin Luther King Plaza
147th St Bronx, NY
12- Story - 176,000 SF
Architect: Magnusson Architect and Planning



An aerial photograph of New York City, specifically the area around Manhattan and the Bronx, is shown in a dark, monochromatic style. Numerous pushpins of various colors (black, white, grey) are stuck into the map, marking specific locations across the city. The pushpins are scattered throughout the image, with some clusters and others isolated. The map shows street grids, parks, and water bodies. The overall tone is professional and technical.

CSE Services

Structural Design

- New Construction
- Alterations & Additions
- Structural Rehabilitation
- Historic Restorations
- Retaining Structures
- Bridge and Culvert Design
- Feasibility Studies
- Structural Investigation (Forensic)

Construction Services

- NYC Special Inspection (Agency Number 5517)
- Demolition Plan
- Support of Excavations (SOE plan)
- Builders Pavement Plan (BPP plan)
- Preconstruction Survey
- Vibration

Peer Review

- Evaluation of Alternate System
- Existing Condition Assessment
- Cost Estimate

CSE Inspection

- Structural Cold Formed Steel
- Concrete Cast in Place
- Masonry
- Soils, Site Preparation
- Soils, Placement
- Deep Foundations/ Piles
- Underpinning
- Excavation, Sheet piling, Shoring and Bracing
- Structural Stability
- Mechanical Demolition

CSE Projects

CSE continued to expand the skyline of the New York City from the Bronx to Brooklyn, from Manhattan to Queens. Our projects vary from residential vertical addition in Williamsburg to high rises in Manhattan.

CSE's work can also be seen in Connecticut, New Jersey, and throughout the New York State.



44 West 37th street New York, NY

This 15-story commercial high-rise has mezzanines on the first and fifteenth floors. The building was designed with a framing consisting of composite steel beams and cast in place floor system as well as masonry walls to resist lateral forces.

With steel beam framing, we were able to accommodate the large open spaces for the office layouts and floor to ceiling glass windows to achieve architect's vision of the modern look.

CSE was retained for Structural Design, SOE plan, and Special Inspection Service.



31 Debevoise Street Brooklyn, NY

Crossing Debevoise and Cook St is a 88,000 square foot twelve story structure. Due to the required open floor layout, the structure utilizes cast in place concrete with flat plate floor slab. This mixed-use tower features 2 stories of commercial use and two levels of underground parking with stacker parking on both levels for 190 cars. The upper ten stories feature 45 residential units. CSE was retained for Structural and SOE Design.

46th Avenue Long Island City, NY

This luxurious 4 story townhouse complex, comprised of 76 units provides 144,000 SF of finished floor space in Long Island City, was selected as one of the top ten largest construction projects in NYC by The Real Deal Magazine in 2015. CSE was retained for Structural Design, SOE, and Special inspection.



1 Sound Shore

Greenwich, CT

This three story class A office building with an underground parking garage, went over a major renovation, including a new façade reconstruction, the new signature of this building is the two-direction slant of the glass rain screen. A comprehensive structural investigation & analysis was performed to review the existing condition since there is no as built drawings available.



3745 Riverdale Ave

Bronx, NY

The lot for this proposed 14 Story, 64,000 square foot structure located at 1567 Riverdale Avenue in the Bronx, NY was designed as a cast-in-place concrete structure. The project consists of 16 dwelling units, 5,000 SF retail, and can accommodate 40 parking spaces.

To accommodate the unique topography and subsurface conditions, CSE was brought in to provide design services as well as the structural Design.

1007 Union Ave

Bronx, NY

This luxurious 124,000 SF building consisting of 6 floors and a parking garage in the cellar will provide a residential area as well as a church building for the members of the community.



Cityscape Engineering provided the structural engineering plan for this project. Our client found that having both scopes performed under one roof would minimize coordination issues and maximize efficiency resulting in an expedited turnaround and a streamlined final product.



411 Kent Avenue

Support of Excavation

Brooklyn, NY

A redevelopment on Domsey clothing store site, the support of excavation of this 1.5- acre site utilizes cantilevered soldier piles, braced soldier piles, and a stabilization berm. The design of the SOE plan was value engineered to minimize structural shoring and maximize

open cut slope despite the limitation of sidewalk closure and utility lines being in close proximity to the property line. CityScape Engineering's experience working on SOE plans within the jurisdiction of the MTA, Metro-North Railroad, and Long Island Railroad facilitated this project. CSE also performed the structure design for the 300,000- square foot building constructed at this site.

CSE Testimonials

"The staff at CSE provides unparalleled
Attention to my projects and are very
Responsive to my needs. Highly Recommended!"

- **Joel Braver, Express Builders** -

"Djohan has proven time and time again that he
is able to come up with creative, practical solutions
to complex problems and deliver on time.
I highly recommend him to anyone looking
For a very competent structural Engineer"

- **Ariel Aufgang, AIA, Aufgang Architects** -

"Djohan is a very competent structural
Engineer who possesses a high degree
Of integrity and professionalism"

- **Rolfe Klint, RA** -



CSE Staff

At CSE, we realize that our staff is our greatest asset. We are committed to a fun, friendly working environment, yet working hard around the clock to get the job done. Our staff takes pride in their work and understands that a quick response to our client needs is crucial to the success of the project.

CSE Location

8 Haven Avenue

Suite 209

Port Washington, NY 11050

Tel. 631.978.5000

Fax. 631.978.0403

www.CityscapeEngineering.com

